

# MySailPoint

**A smarter way to manage identity security.**

MySailPoint is your identity security command center that enables you to control what data you see, how you view it, and gives you the ability to take action on that data. The dashboard is customizable to your needs and capable of surfacing the identity data you need to manage and secure identities. It provides a user experience that aggregates insights across our portfolio in one place. No more searching for hours through multiple interfaces for the right data. Instead, we provide you widgets that you control, to reveal data you need to perform your job quickly and efficiently, giving you a completely personalized experience.

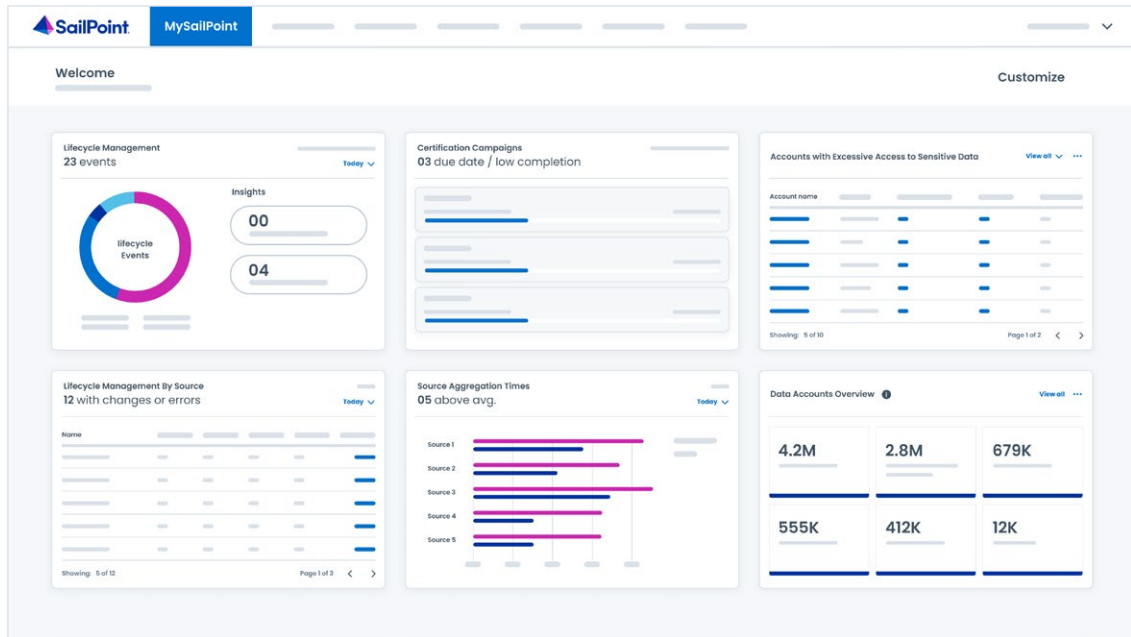
## Notable features

**Built around personas:** MySailPoint is designed to give the right high-level insights to the right users. Admins will see different insights than end users because their needs are different.

**Completely configurable:** Starting with Admins, users will be able to configure the layout of their MySailPoint page to their liking. This includes the ability to enable/disable and drag/drop widgets around so that your MySailPoint page is truly yours.

## BENEFITS

- ▶ Streamlined and centralized access governance within SailPoint's identity security platform
- ▶ Drag/Drop functionality for customization - users have the ability to manage the way their homepage is arranged
- ▶ Visibility into individual certification campaigns to see more details, reassign and/or email reviewers
- ▶ Surface the insights users need when they need them
- ▶ Derive cross-product insights
- ▶ Take action right from the Home Page
- ▶ Save significant time from not having to search multiple interfaces for the information you need



## MySailPoint widgets overview

MySailPoint currently has six (6) widgets, featured below, as well as seven (7) action tiles brought over from the previous homepage experience. There will be widgets continually added as well, and soon, the ability for your developer teams to build custom widgets.

<b>Lifecycle management</b>	A snapshot of lifecycle events that have occurred over a period of time.
<b>Certification campaigns</b>	View the status of active certification campaigns that are due soon, including the due date and percentage complete.
<b>Lifecycle management by source</b>	A breakdown of errors and changes in lifecycle state by source.
<b>Source aggregation times</b>	Quickly see any errors or alerts that are happening, sorted by source.
<b>Data accounts overview</b>	A view into access violations and other potentially risky items to be evaluated.
<b>Accounts with excessive access to sensitive data</b>	Shows the top 10 accounts that have access to sensitive resources that can be evaluated by admins.



### **About SailPoint**

SailPoint is the leading provider of identity security for the modern enterprise. Enterprise security starts and ends with identities and their access, yet the ability to manage and secure identities today has moved well beyond human capacity. Using a foundation of artificial intelligence and machine learning, the SailPoint Identity Security Platform delivers the right level of access to the right identities and resources at the right time—matching the scale, velocity, and environmental needs of today's cloud-oriented enterprise. Our intelligent, autonomous, and integrated solutions put identity security at the core of digital business operations, enabling even the most complex organizations across the globe to build a security foundation capable of defending against today's most pressing threats.

©2023 SailPoint Technologies, Inc. All rights reserved. SailPoint, the SailPoint logo and all techniques are trademarks or registered trademarks of SailPoint Technologies, Inc. in the U.S. and/or other countries. All other products or services are trademarks of their respective companies.