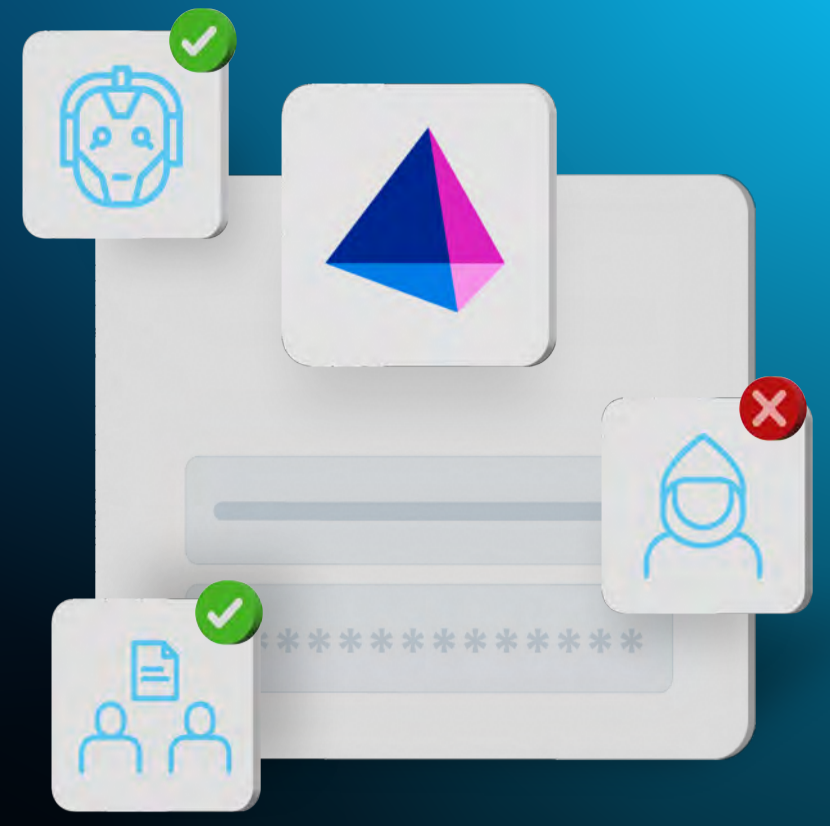


# Attacker economics in manufacturing



Why manufacturing cyber-resilience requires an identity-first security strategy

**\$9.5 TRILLION**

predicted costs associated with cybercrime in 2024<sup>1</sup>

If measured as a country, cybercrime would rank 3rd to the US and China.

More profitable than the global trade of all major illegal drugs combined.

**90%**

of manufacturing cyberattacks are targeted, which can threaten operational uptime.<sup>2</sup>

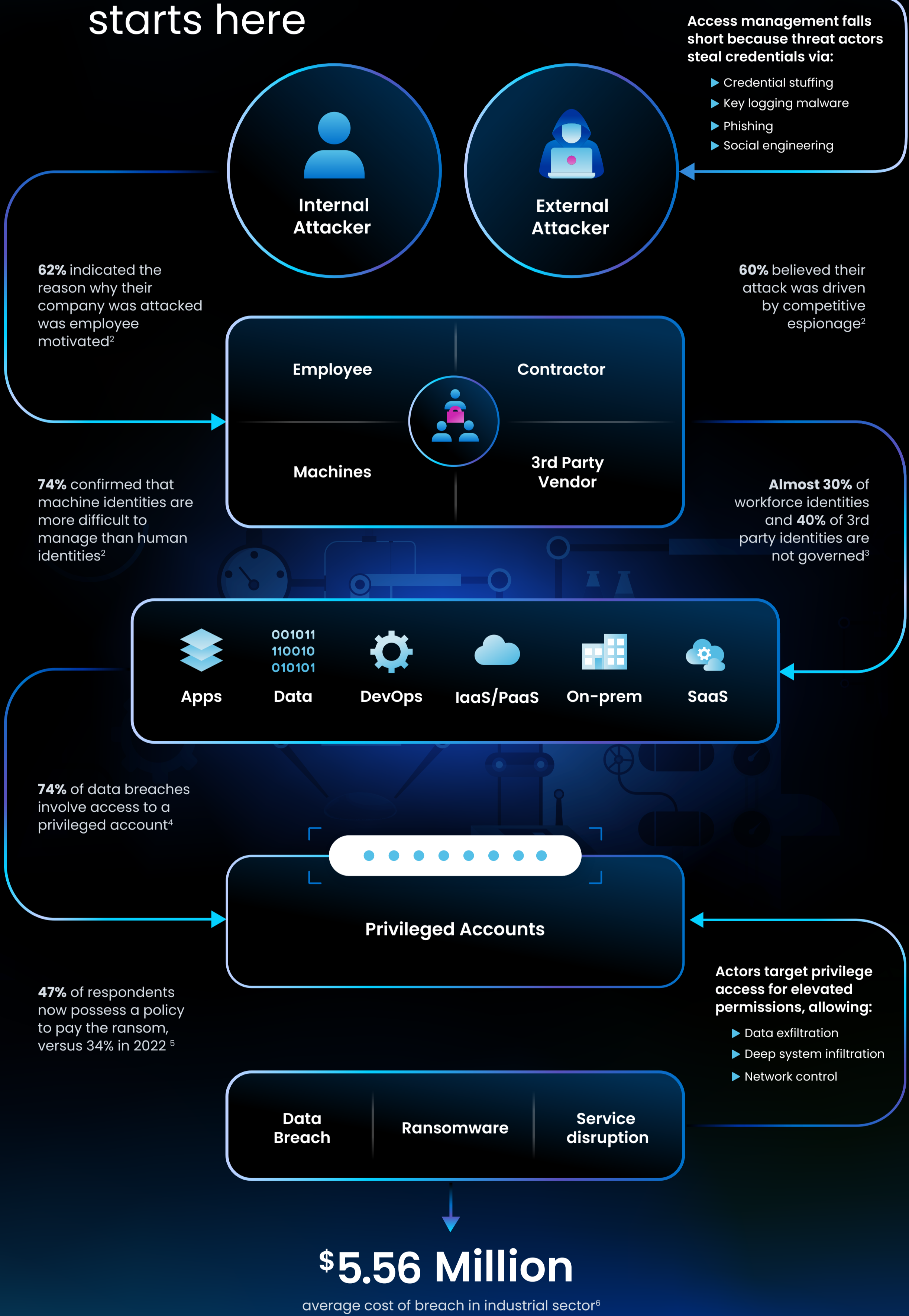
**63%**

of manufacturing executives reported an identity-related cybersecurity breach within two years.<sup>2</sup>

**81%**

of manufacturers indicated overprovisioning increase their cyberattack vulnerability.<sup>2</sup>

## Attack chain starts here



## Manufacturing resilience requires an identity-first strategy. Here's how we can help.

**4 hours**

staff onboarding process was reduced from 10 days<sup>7</sup>

**12K**

workflows automatically managed<sup>8</sup>

**40%**

reduction in manually provisioned support tickets<sup>8</sup>



### Help your identity security program

become more mature with key findings and critical insights from our 2024 State of Identity Security in Manufacturing report.

[Get the report](#)