

SailPoint IdentityIQ

Integration Module for Epic

Electronic Health Record (EHR) systems are the heart of hospital operations. Now, more than ever, managing user access to these systems is critical to security and regulatory compliance requirements, including HIPAA. This is due to the large number of users: employees, contracted clinicians, vendor partners, students or any users who interact with sensitive healthcare data through Epic as part of their regular workflow.

Key Business Benefits

Accelerates deployment of identity governance processes

Seamlessly integrates Epic into compliance and lifecycle processes without need for custom development.

Minimizes interruption to hospital operations

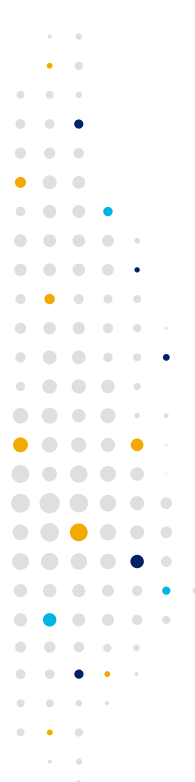
Reduces downtime for new hires and transfers by automating changes to access rights in Epic.

Reduces compliance risks

Mitigates risk of regulatory non-compliance by automating processes to reduce human errors.

Governing Access to Epic

With IdentityIQ providing unparalleled 360-degree visibility of user access across hybrid IT environments (including internal and external users such as clinicians, non-clinical staff, affiliates, research partners and vendors), the IdentityIQ Integration Module for Epic expands coverage to Epic systems – allowing it to be part of a unified and comprehensive approach to governing access. Its advanced connectivity to Epic's EHR delivers process automation that leads to greater efficiency for provider provisioning teams. It further reduces errors in granting access to caregivers and others who interact with health data.



Key Features

Out-of-the-box integration module

Enables rapid integration with Epic systems and minimizes connector deployment time and services costs.

Streamlines data aggregation

Automatically pulls users, accounts and entitlements from Epic and correlates them with the users within IdentityIQ.

Automates account changes

Orchestrates change requests to Epic based on compliance and provisioning events triggered within IdentityIQ.

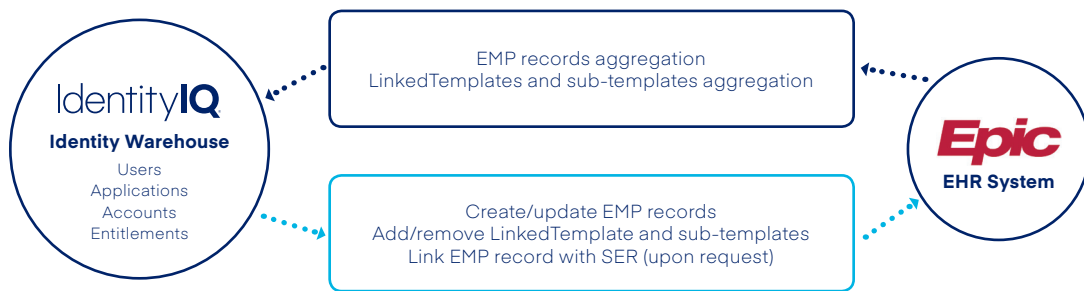


Figure 1: Architecture and Processes

**SAILPOINT:
THE POWER
OF IDENTITY™**

sailpoint.com

SailPoint, the leader in enterprise identity management, brings the Power of Identity to customers around the world. SailPoint’s open identity platform gives organizations the power to enter new markets, scale their workforces, embrace new technologies, innovate faster and compete on a global basis. As both an industry pioneer and market leader in identity governance, SailPoint delivers security, operational efficiency and compliance to enterprises with complex IT environments. SailPoint’s customers are among the world’s largest companies.